

MID-ATLANTIC TAB



MID - ATLANTIC
TAB
TECHNICAL ASSISTANCE TO
BROWNFIELDS COMMUNITIES

Brownfields

DELAWARE

MARYLAND

PENNSYLVANIA

VIRGINIA

WEST VIRGINIA

WASHINGTON D.C.

The **U.S. Environmental Protection Agency (EPA)** funds **Technical Assistance to Brownfields Communities (TAB)** programs nationwide to provide technical assistance to communities and stakeholders to help address brownfield sites and increase community involvement in the cleanup, revitalization, and reuse of brownfields.



Our Services

Brownfields education and training

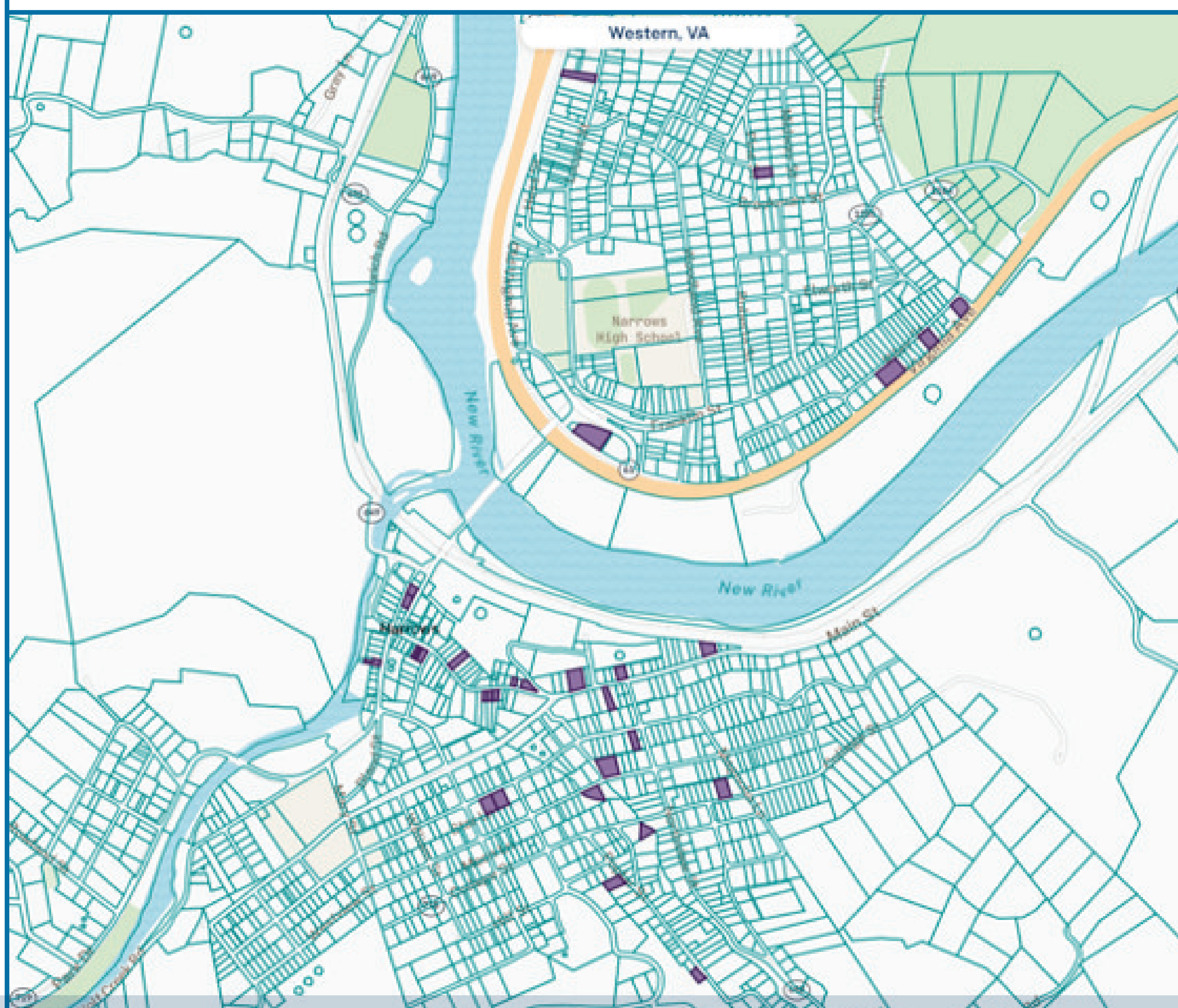
Project support, including planning, ~~identifying~~, and technical document review

Brownfield inventory support

EPA brownfields grant review

Support for EPA grant implementation

State-specific resource information



OUR PARTNERS

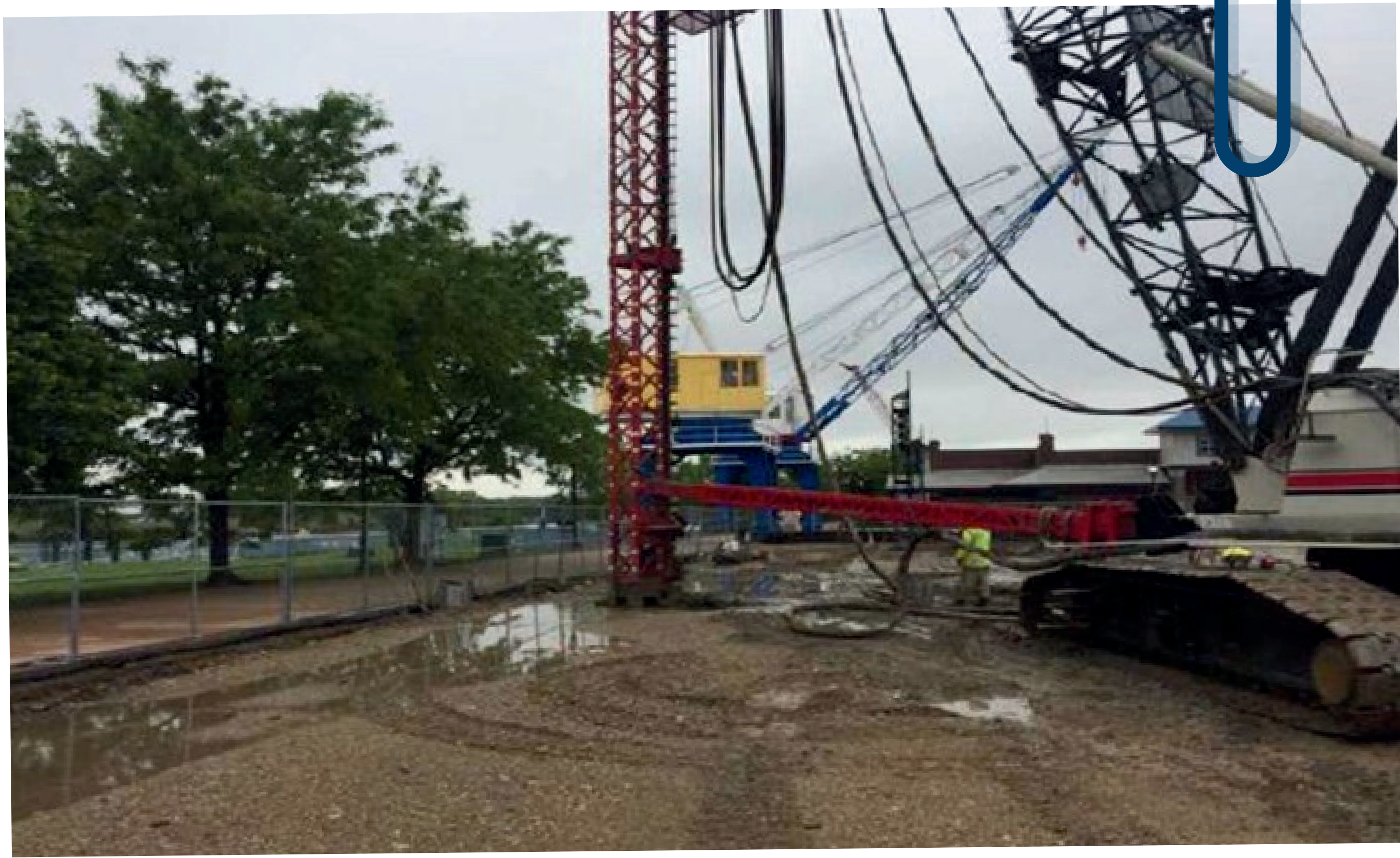


MID-ATLANTIC TAB



MID - ATLANTIC
TAB
TECHNICAL ASSISTANCE TO
BROWNFIELDS COMMUNITIES

Brownfields



Before Christina Riverfront Hotel



After Christina Riverfront Hotel

EXAMPLE OF A BROWNFIELD REDEVELOPMENT FROM DELAWARE

Typical Brownfield Sites

~~Mine-scarred Lands~~

Abandoned Railroads

Vacant Warehouses and Factories

Landfills

Parking Lots

Former Service Stations



WHAT IS A BROWNFIELD?

The **U.S. Environmental Protection Agency** (EPA) defines a brownfield as “real property, the expansion, redevelopment, or reuse of which may be complicated by the presence or potential presence of a hazardous substance, pollutant, or contaminant.” With over 450,000 estimated brownfields in the U.S., the challenge to transform these properties into more attractive, usable sites is being addressed all over the country.

Brownfield Redevelopment Goals

Turn community health and safety liabilities into community assets

Create new, local jobs

Increase property values

Eliminate eyesores

Enhance economic/tax base development

Support sustainable use of land, by preserving greenfields and preventing sprawl

Links economic vitality with environmental benefits



OUR PARTNERS

